

CINELINE

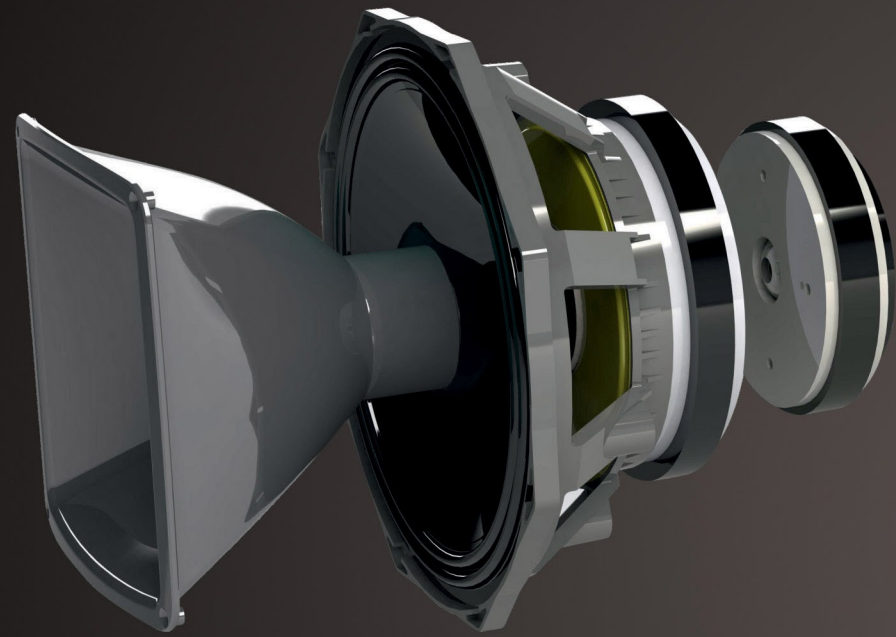
pulz[®]

**EVERY SEAT -
A PRIME SEAT!**



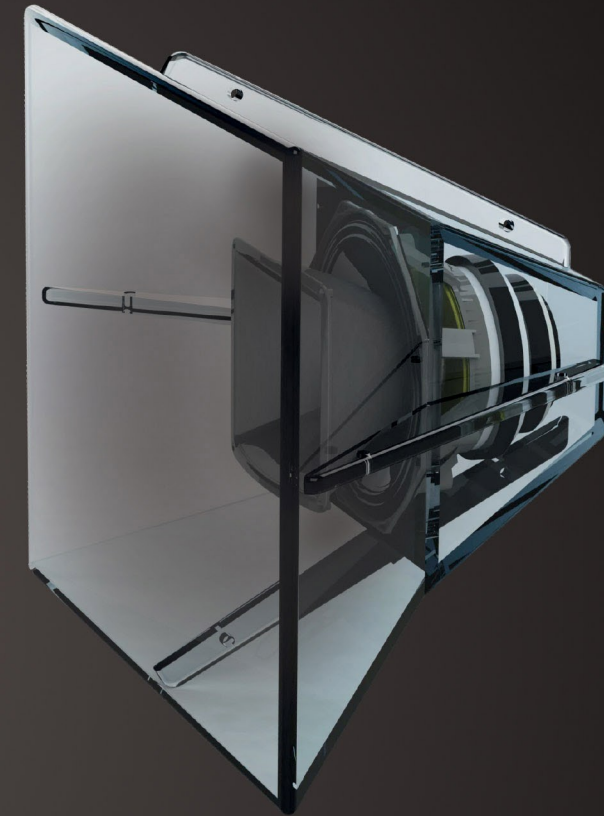
ISOWAVE SERIES

Motor System



The core of the IsoWave system consists of 12" extremely Low-Mid driver with a coaxially mounted 1.4" exit compression driver. The high frequency driver is loaded with a 90° horizontal x 60° vertical waveguide. This sophisticated waveguide also loads the 12" low frequency driver. Together the system forms a high sensitivity, high SPL motor system with exceptional linearity and directivity control.

Horn



The system is further loaded with a large format 90° horizontal x 60° vertical horn made of MDF. The outer horn is scalable. The low frequency section is powered with either two or four 15" long throw ultra low distortion low frequency drivers. The low frequency enclosure is optimally coupled to the Mid – High section for minimum lobes. The resultant frequency response is uniform and easy to equalize when required. DSP settings are provided for optimum performance.

The design emphasizes consistency and stability on as well as off axis response providing more consistent sound compared to designs utilizing offset drivers. The enhanced sonic accuracy IsoWave speaker system is only possible due to the carefully integrated coaxial solution.

IsoWave Speaker Systems are available in different configurations to cater to cinemas of various sizes.

ISOWAVE M2



FEATURES

- Coherent wavefront
- Point source reproduction
- Coaxial design with waveguide loading
- 90° X 60° MDF horn
- High dynamic SPL
- Low harmonic distortion
- Smooth and extended frequency response
- Enhanced sonic accuracy

The IsoWave M2 3-Way Speaker System design emphasizes on consistency and linearity of on and off axis response providing more spatially consistent sound compared to designs utilizing offset drivers. The enhanced sonic accuracy of IsoWave speaker system is primarily possible due to the carefully integrated coaxial solution.

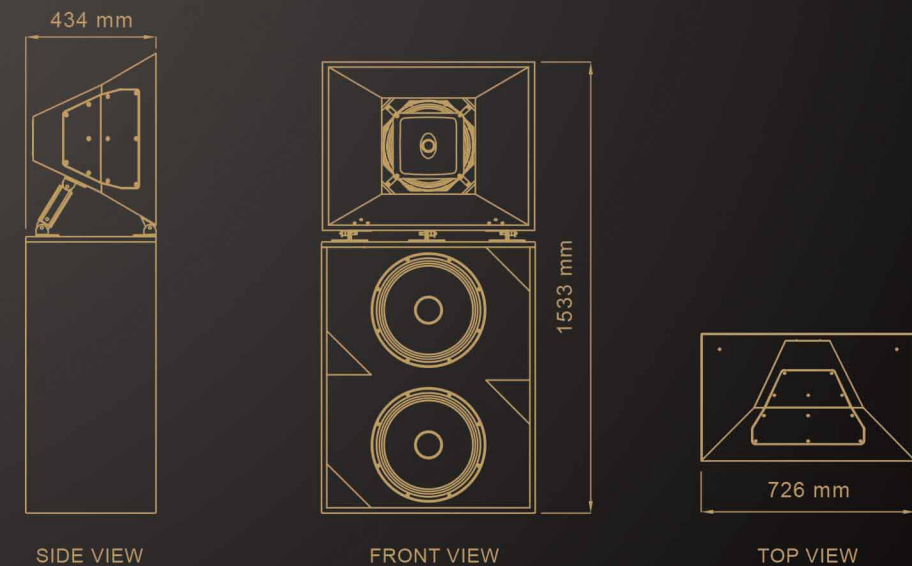
The Mid-High section of IsoWave M2 incorporates a 12" extremely low distortion Low-Mid driver in conjunction with a coaxially mounted 1.75" voice coil high frequency compression driver. The High frequency driver is loaded with a 90°horizontal x 60° vertical wave guide. This sophisticated waveguide also loads the 12" low frequency driver. Together the system forms a high sensitivity, high SPL motor system with exceptional linearity and directivity control.

The system is further loaded with a 90° horizontal x 60° vertical horn made of MDF. The horn can be vertically tilted by 0° to 17.5° in increments of 2.5° to optimally achieve front to back coverage of the auditorium.

The low frequency section is powered with two 15" long throw weather resistant Low frequency drivers. The low frequency enclosure is optimally coupled to the Mid-high section to reproduce lobe free wavefront. The resultant frequency response is uniform and easy to equalize when required. DSP settings are provided for optimum performance when using either a bi-amp or tri-amp configuration.

SPECIFICATIONS:

Frequency Response:	45Hz to 20kHz
Power Rating:	LF: 1000W AES, 4000W peak; MF: 500W AES, 2000W peak; HF: 80W AES, 450W peak
Sensitivity:	LF: 101dB @ 1W/1m; MF: 105dB @ 1W/1m; HF: 113dB @ 1W/1m
Maximum SPL:	LF: 131dB continuous, 137dB peak @ 1m; MF: 132dB continuous, 138dB peak @ 1m; HF: 132dB continuous, 138dB peak @ 1m
Nominal Impedance:	LF: 4Ω; MF: 8Ω; HF: 16Ω
Recommended Amplifier:	800W to 1300W @ 4Ω
Low Frequency Driver:	2 X 15" (380 mm) weather resistant long excursion woofer
Mid Frequency Driver:	12" (300 mm) Low-Mid driver with coaxial entry
High Frequency Driver:	1.75" (44 mm) voice coil compression driver mounted coaxially
Crossover:	250Hz Active, 1.2kHz Active or Passive
Dispersion:	90° horizontal X 60° vertical
Finish:	Black impact resistance structured coating
Connector:	Push type binding post, cable upto 4 mm diameter
Enclosure:	18 mm MDF direct radiator vented enclosure
Dimensions (H X W X D):	1533 mm X 726 mm X 434 mm (60.4" X 28.6" X 17")
Net Weight:	98 kg (216 lb)
Packed Weight:	106 kg (234 lb)



ISOWAVE D4



FEATURES

- Coherent wavefront
- Point source reproduction
- Coaxial design with waveguide loading
- Large 90° X 60° MDF horn
- High dynamic SPL
- Low harmonic distortion
- Smooth and extended frequency response
- Enhanced sonic accuracy

The IsoWave D4 3-Way Speaker System design emphasizes on consistency and linearity of on and off axis frequency response providing more spatially consistent sound compared to designs utilizing offset drivers. The enhanced sonic accuracy of IsoWave Speaker System is primarily possible due to the carefully integrated coaxial solution.

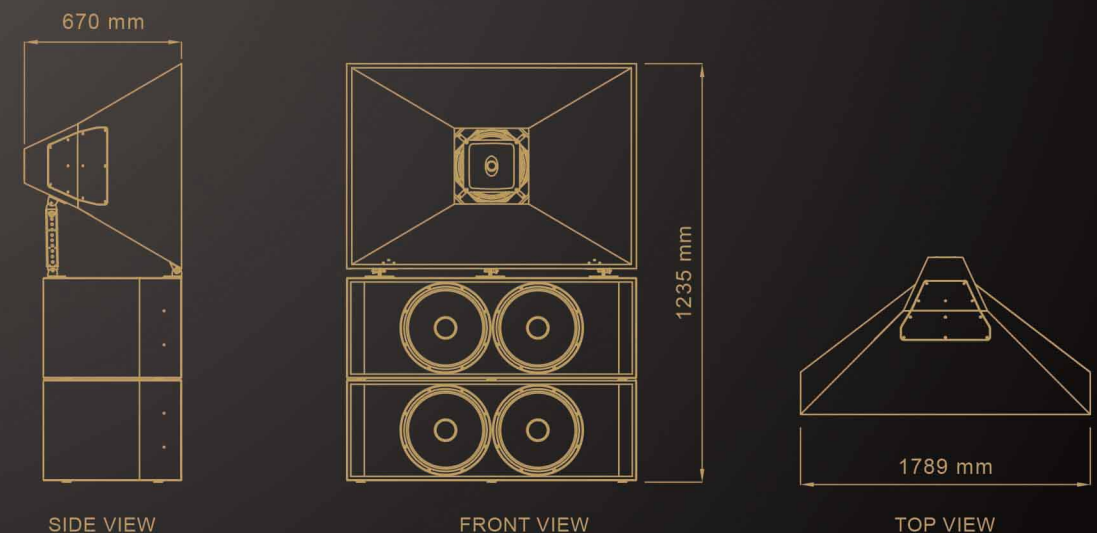
The Mid-High section of IsoWave D4 incorporates a 12" extremely low distortion Low-Mid driver in conjunction with a coaxially mounted 1.75" voice coil high frequency compression driver. The High frequency driver is loaded with a 90° horizontal x 60° vertical waveguide. This sophisticated waveguide also loads the 12" low frequency driver. Together the system forms a high sensitivity, high SPL motor system with exceptional linearity and directivity control.

The system is further loaded with a 90° horizontal x 60° vertical large horn made of MDF enhancing propagation control down to 250 Hz . The horn can be vertically tilted by from 0° to 22.5° in increments of 2.5° to accurately achieve desired vertical coverage.

The low frequency section is powered with four 15" long throw weather resistant Low frequency drivers. The low frequency enclosure is optimally coupled to the Mid-High section to reproduce lobe free wavefront. The resultant frequency response is uniform and easy to equalize when required. DSP settings are provided for optimum performance when using either a bi-amp or tri-amp configuration.

SPECIFICATIONS:

Frequency Response:	45Hz to 20kHz
Power Rating:	LF: 2000W AES, 8000W peak; MF: 500W AES, 2000W peak; HF: 80W AES, 450W peak
Sensitivity:	LF: 104dB @ 1W/1m; MF: 105.5dB @ 1W/1m; HF: 113dB @ 1W/1m
Maximum SPL:	LF: 137dB continuous, 143dB peak @ 1m; MF: 132.5dB continuous, 138.5dB peak @ 1m; HF: 132dB continuous, 138dB peak @ 1m
Nominal Impedance:	LF: 4Ω; MF: 8Ω; HF: 16Ω
Recommended Amplifier:	800W to 1300W @ 4Ω X 2 Ch.
Low Frequency Driver:	4 X 15" (380 mm) weather resistant long excursion woofer
Mid Frequency Driver:	12" (300 mm) Low-Mid driver with coaxial entry
High Frequency Driver:	1.75" (44 mm) voice coil compression driver mounted coaxially
Crossover:	250Hz Active, 1.2kHz Active or Passive
Dispersion:	90° horizontal X 60° vertical
Finish:	Black impact resistance structured coating
Connector:	Push type binding post, cable upto 4mm diameter
Enclosure:	18 mm MDF direct radiator vented enclosure
Dimensions (H X W X D):	1235 mm X 1789 mm X 670 mm (48.6" X 70.4" X 26.4")
Net Weight:	145 kg (320 lb)
Packed Weight:	156 kg (344 lb)



sound matters



Pulz Electronics Ltd.

Kailashpati, 2nd Floor,
Plot 10A, Veera Desai Road,
Andheri (W), Mumbai 400 053, India
Tel: +91 22 2673 2593

www.pulz.co.in

Pulz reserves the right to make changes in specifications without prior notice.